



Nissan Intelligent Mobility moves you one step ahead. In cars that feel like an extension of you, helping you see more and sense more, reacting with you, and sometimes even for you. Nissan Intelligent Mobility is about a better future – moving through life with greater confidence, excitement and connection to the world around you.



2021  
VERSA®



<sup>1</sup>Availability of features vary by vehicle model year, model, trim level, packaging, and options. Please see Owner's Manual for important feature information. <sup>2</sup>2021 Fuel Consumption Estimates L/100 km (MPG) - 8.6 (33) City / 6.7 (42) Highway / 7.7 (37) Combined for Versa® with Manual Transmission; 7.4 (38) City / 5.9 (48) Highway / 6.7 (42) Combined for Versa with Xtronic CVT®. Actual mileage may vary with driving conditions. Use for comparison only. <sup>3</sup>Driving is serious business and requires your full attention. If you have to use the connected device while driving, exercise extreme caution at all times so full attention may be given to vehicle operation. <sup>4</sup>Feature availability is dependent on vehicle model, trim level, packaging and options. Compatible connected device may be required and feature availability may be dependent on device's capability. Refer to connected device's Owner's Manual for details. Late availability for some features. Driving is serious business and requires your full attention. Only use features and connected devices when safe and legal to do so. Some features, are dependent upon the telematics device being in operative condition, its ability to connect to a wireless network, compatible wireless network availability, navigation map data and GPS satellite signal receptions, the absence of which can limit or prevent the ability to reach Customer Care or receive support. GPS mapping may not be detailed in all areas or reflect current road status. Never program GPS while driving. Some services and features are provided by independent companies not within Nissan's control. **Should service provider terminate or restrict service or features, service or features may be suspended or terminated without notice or with no liability to Nissan or its partners or agents.** Services and features may require compatible cellular network provided by independent companies not within Nissan or its partners' or agents' control. Cellular network signal strength may vary and may not be available in all areas or at all times. Services and features may not function if cellular network is unavailable, restricted, or terminated. Nissan and its partners or agents are not responsible for associated costs or other third party changes that may be required for continued operation due to cellular network unavailability, restriction, or termination (including equipment replacements/upgrades, if available, or roaming charges on alternative networks). Technology is evolving, and changes by independent companies are not within Nissan's or its partners' or agents' control. Enrollment, owner consent, personal identification number (PIN), and subscription agreement may be required to receive full suite of features and services. Trial periods (if applicable) begin on the date of vehicle purchase or lease of a new Nissan. Trial periods may be subject to change at any time and may be subject to early termination without notice. Required subscriptions may be sold separately for each available feature or service after trial period ends, and may continue until you call service provider to cancel. Installation costs, one-time activation fee, other fees and taxes may apply. Fees and programming subject to change. Feature may be subject to age restrictions in some areas. Subscriptions governed by service provider's subscription agreement, terms and conditions and privacy statements available at service provider's website. Text rates or data usage may apply. The Nissan names, logos and slogans are trademarks owned by or licenced to Nissan Motor Co. Ltd. or its North American subsidiaries. Other trademarks and trade names are those of their respective owners. **For important safety information, system limitations, and additional operating and feature information, see Dealer or Owner's Manual.** <sup>5</sup>Use the text messaging feature after stopping your vehicle in a safe location. If you have to use the feature while driving, exercise extreme caution at all times so full attention may be given to vehicle operation. Compatible smartphone required. Text rates and/or data usage may apply. <sup>6</sup>Never program while driving. GPS mapping may not be detailed in all areas or reflect current road status. <sup>7</sup>Driving is serious business and requires your full attention. If you have to use the feature while driving, exercise extreme caution at all times so full attention may be given to vehicle operation. <sup>8</sup>Information displayed is dependent on how vehicle is equipped. <sup>9</sup>Available feature. <sup>10</sup>Provincial laws may apply; review local laws before using. <sup>11</sup>Availability of specific features is dependent upon the phone's Bluetooth® support. Please refer to your phone Owner's Manual for details. Bluetooth® word mark and logos are owned by Bluetooth SIG, Inc., and any use of such marks by Nissan is under license. <sup>12</sup>Nissan advanced safety technologies can't prevent all collisions or warn in all situations. See Owner's Manual for important safety information. <sup>13</sup>Intelligent Emergency Braking with Pedestrian Detection cannot prevent all collisions and may not provide warning or braking in all conditions. Driver should monitor traffic conditions and brake as needed to prevent collisions. See Owner's Manual for safety information. <sup>14</sup>Rear Intelligent Emergency Braking cannot prevent all collisions and may not provide warning or braking in all conditions. Driver should monitor traffic conditions and brake as needed to prevent collisions. See Owner's Manual for safety information. <sup>15</sup>Rear Cross Traffic Alert may not detect all vehicles. See Owner's Manual for safety information. <sup>16</sup>Blind Spot Warning cannot prevent collisions and may not detect every object or warn in all situations. Driver should always turn and look before changing lanes. See Owner's Manual for safety information. <sup>17</sup>Lane Departure Warning only operates when lane markings are able to be detected. See Owner's Manual for safety information. <sup>18</sup>Cargo shown for display purposes only. Cargo and load capacity limited by weight and distribution. Always secure cargo. <sup>19</sup>Extra cost option. <sup>20</sup>Whichever occurs first. <sup>21</sup>Intelligent Forward Collision Warning cannot prevent collisions. See Owner's Manual for safety information. <sup>22</sup>RearView Monitor may not detect every object and does not eliminate blind spots or warn of moving objects. See Owner's Manual for safety information. <sup>23</sup>Airbags are only a supplemental restraint system. Always wear your seat belt. Rear-facing child restraints should not be placed in the front-passenger's seat. All children 12 and under should ride in the rear seat properly secured in child restraints, booster seats, or seat belts according to their size. Airbags will only inflate in certain accidents. See Owner's Manual for safety information. <sup>24</sup>Tire Pressure Monitoring System is not a substitute for regular tire pressure checks. See Owner's Manual for safety information. <sup>25</sup>Vehicle must be on for the Easy-Fill Tire Alert to operate. <sup>26</sup>Intelligent Driver Alertness cannot provide a warning in every situation. See Owner's Manual for safety information. <sup>27</sup>Does not detect people or cargo. Always check rear seat before exiting. See Owner's Manual for safety information. <sup>28</sup>XM® and SiriusXM® Satellite Radio is available in the 10 Canadian provinces and the 48 contiguous United States. Subscription sold separately after trial period. All subscriptions subject to customer agreement at [siriusxm.ca/terms](http://siriusxm.ca/terms). All fees and programming subject to change. ©2020 Sirius XM Canada Inc. The Sirius®, XM®, and SiriusXM® names and all related marks and logos are trademarks of Sirius XM Radio Inc. All other trademarks are the property of their respective owners. <sup>29</sup>Brake Assist cannot prevent all collisions and may not provide warning or braking in all conditions. Driver should monitor traffic conditions and brake as needed to prevent collisions. See Owner's Manual for safety information. <sup>30</sup>Vehicle Dynamic Control cannot prevent collisions due to abrupt steering, carelessness, or dangerous driving techniques. It should remain on when driving, except when freeing the vehicle from mud or snow. See Owner's Manual for safety information. Android Auto, Google, YouTube and other marks are trademarks of Google LLC. CarPlay®, Apple Music®, Siri® and Siri® Eyes Free are registered trademarks of Apple, Inc. Bluetooth® is a registered trademark of Bluetooth SIG, Inc. Facebook® is a registered trademark of Facebook, Inc. Instagram® is a registered trademark of Instagram, LLC. iPhone® is a registered trademark of Apple, Inc. All rights reserved. iPhone® or other external device not included. The Sirius®, XM®, and SiriusXM® names and all related marks and logos are trademarks of Sirius XM Radio Inc. All other trademarks are the property of their respective owners. Twitter® is a registered trademark of Twitter, Inc. All illustrations, photographs and specifications in this brochure are based on the latest product information. See actual vehicle for complete accuracy. Nissan Canada Inc. reserves the right to make changes at any time, without notice, in prices, colours, materials, equipment, specifications and models, and to discontinue models or equipment. For information on additional options and accessories, contact your Nissan Dealership. Registered trademarks are property of their respective owners. At [nissan.ca](http://nissan.ca), you'll find a way to "build your own Nissan," a dealer locator, and more information about key Nissan support services. The Nissan names, logos, product names, feature names, and slogans are trademarks owned by or licenced to Nissan Motor Co. Ltd. and/or its North American subsidiaries. **Always wear your seat belt, and please drive responsibly.** ©2020 Nissan Canada Inc. All rights reserved. Catalogue number: 99999-VER21EN.





## Tech for a world that never stops

It's everything you're looking for, and more. Versa® features Nissan Intelligent Mobility technologies that can help keep you safe and connect you to your world like never before.<sup>1</sup> Want personalization? You got it. Interior tech lets you customize every drive, from the digital gauges<sup>9</sup> to your perfect temperature. Advanced performance features enable you to merge and manoeuvre with ease, while getting up to 5.9 highway L/100 km.<sup>2</sup> This is tech that keeps you a step ahead. This is the 2021 Nissan Versa.



**Best Driver Appeal among  
Small Cars in the U.S.**

**-J.D. Power, 2020**

For J.D. Power 2020 award information, go to  
[jdpower.com/awards](https://www.jdpower.com/awards) for more details.





U.S. instrumentation shown.



U.S. instrumentation shown.



U.S. instrumentation shown.

### Advanced Drive-Assist® Display

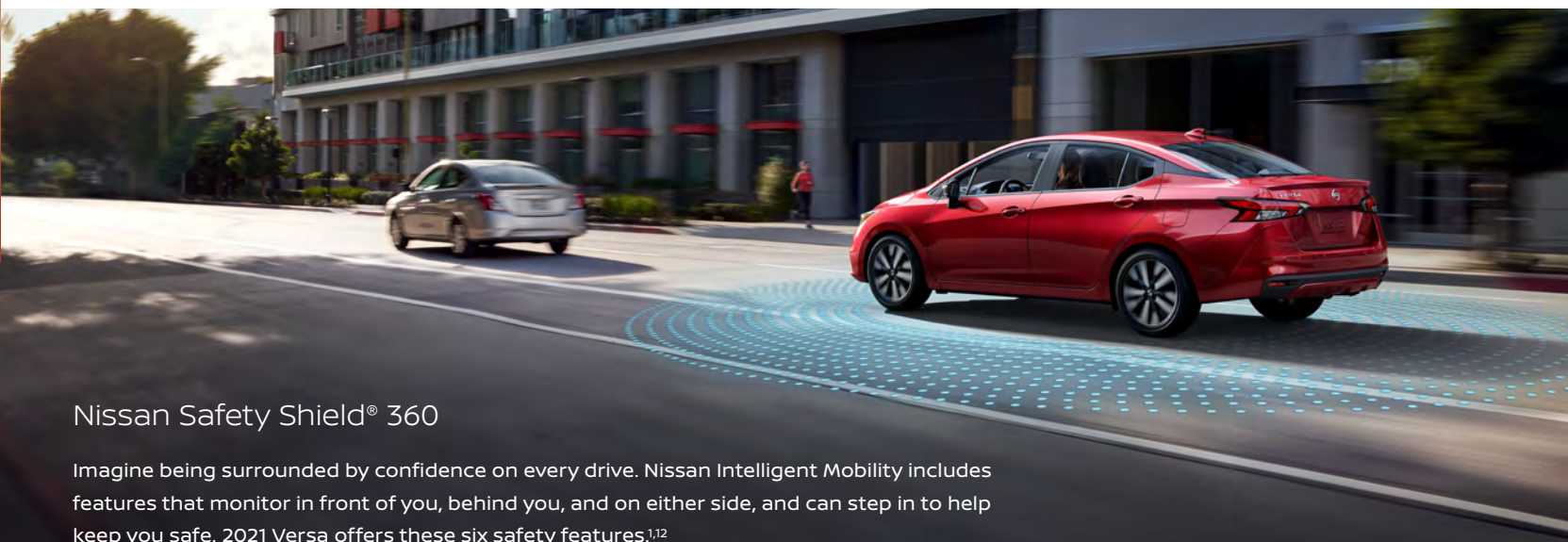
The innovative Advanced Drive-Assist Display is at your command. The 178 mm (7") touch-screen display can be customized to show everything from your tachometer to music to fuel economy history.<sup>7,8,9</sup>

**Bluetooth® Audio** Bluetooth® and beyond, the Versa lets you start your car from afar and play music and audiobooks wirelessly from your compatible smartphone.<sup>10,11</sup>

### Smartphone Connectivity

**Apple CarPlay® integration** People to see? Places to be? Just ask Siri.® Equipped with Siri® voice control, Apple CarPlay® brings on board to your Versa your contacts, favourite messaging apps, Apple Music® playlists, Apple Maps, and more. Simply plug in your compatible iPhone® and go.<sup>3,4,5,9</sup>

**Android Auto** With Android Auto™ you can keep your eyes on the road and hands on the wheel while using your voice to help you with your day. Ask Google to play your favourite song, navigate home, or respond to a text hands-free. Just say, "Hey Google" or long-press the voice control button on your steering wheel.<sup>3,4,5,6,9</sup>



### Nissan Safety Shield® 360

Imagine being surrounded by confidence on every drive. Nissan Intelligent Mobility includes features that monitor in front of you, behind you, and on either side, and can step in to help keep you safe. 2021 Versa offers these six safety features.<sup>1,2</sup>

- Intelligent Emergency Braking with Pedestrian Detection<sup>13</sup>
- Rear Intelligent Emergency Braking<sup>14</sup>
- Rear Cross Traffic Alert<sup>9,15</sup>
- Blind Spot Warning<sup>9,16</sup>
- Lane Departure Warning<sup>17</sup>
- High Beam Assist



Great fuel efficiency, plenty of power, infinite city fun

Versa® gives you an exceptional 5.9 highway L/100 km<sup>2</sup> fuel economy and still delivers more power than before. That means plenty of punch around town and when merging on the freeway.

7.4 L/100 km (38 MPG) City<sup>2</sup>

5.9 L/100 km (48 MPG) Hwy<sup>2</sup>



### Pass-through trunk and 60/40-split seatbacks

When you need more room for cargo, the 60/40-split fold-down rear seats let you add some gear, with a passenger still aboard. Or fold both seats down and really pack it in.<sup>9,18</sup>



It's okay to say "wow" every time you get in

From the moment you get in, you'll feel like you've been upgraded. Impressive fit and finish, smart design, and tech you might find in some luxury vehicles all add up to your everyday wow moment.

D-shaped steering wheel

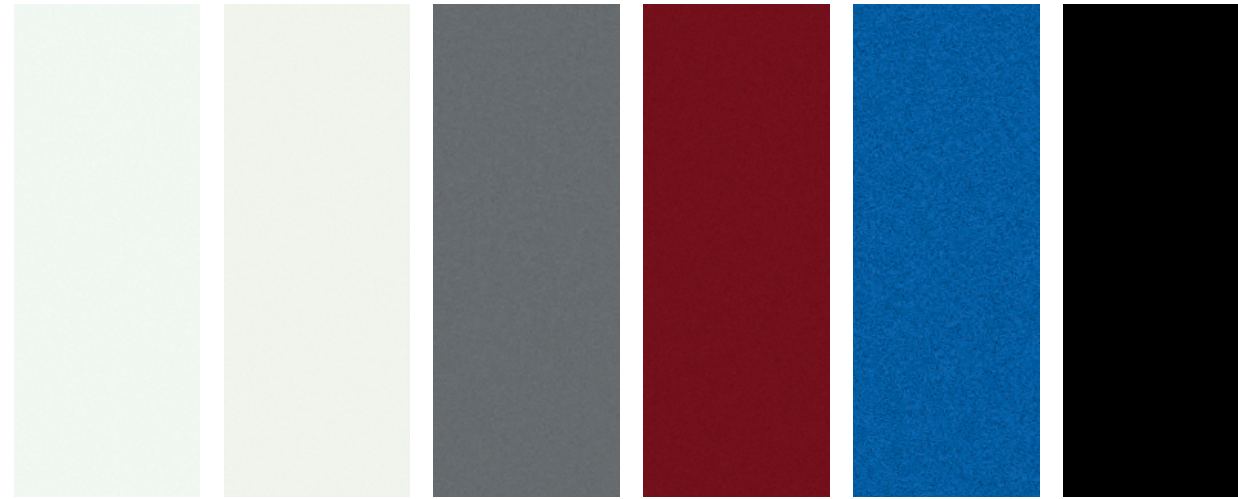
178 mm (7") touch-screen display

Contrast dash stitching<sup>9</sup>

U.S. instrumentation shown.



## CHOOSE YOUR COLOUR



Fresh Powder QM1

Aspen White  
TriCoat<sup>19</sup> QAC

Gun Metallic<sup>19</sup> KAD

Scarlet Ember<sup>19</sup> NBL

Electric Blue  
Metallic<sup>19</sup> B51

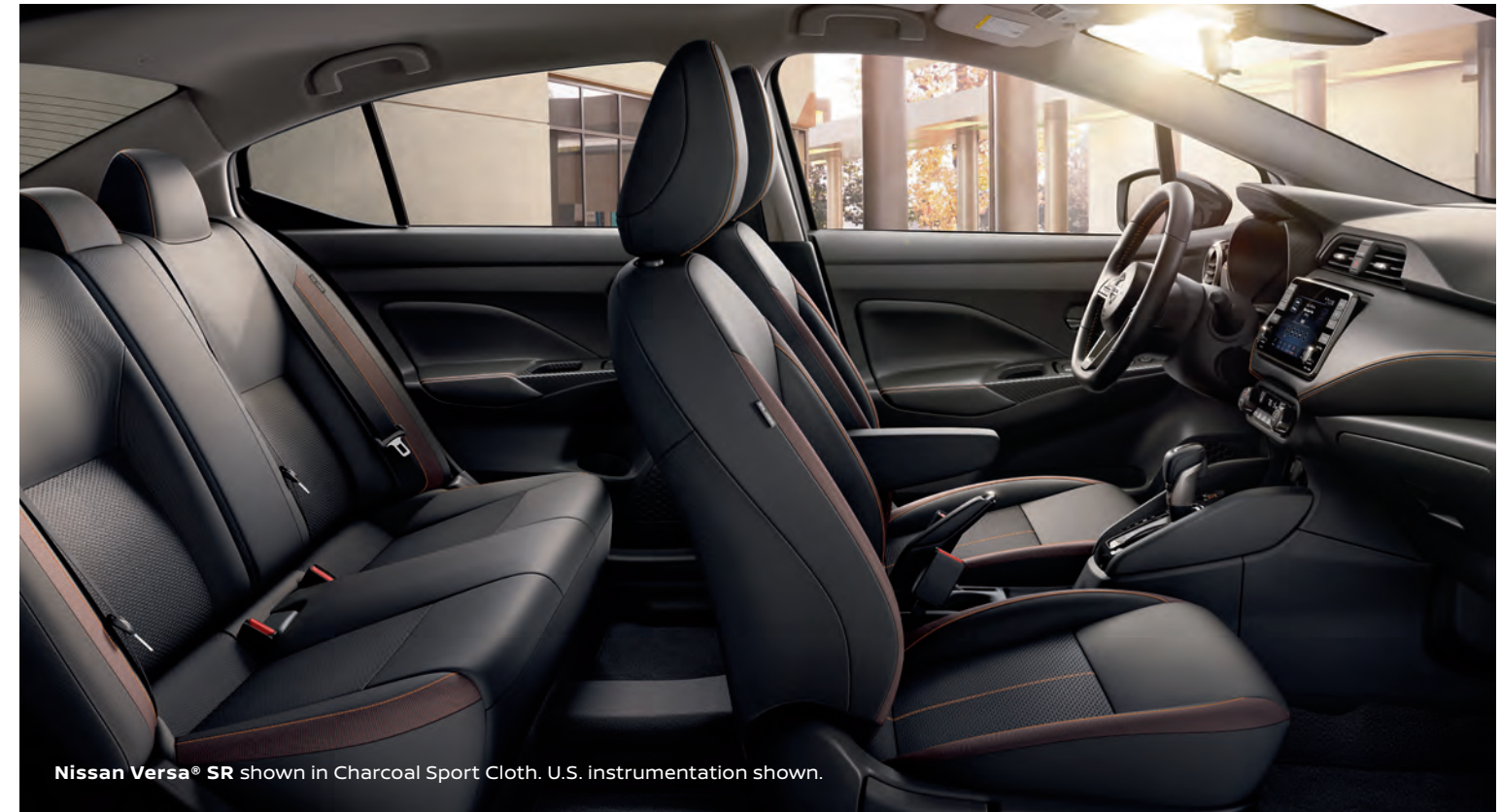
Super Black KH3

	S	SV	SR	S	SV	SR	S	SV	SR	S	SV	SR	S	SV	SR	S	SV	SR
CHARCOAL CLOTH	■						■									■		
GRAPHITE PREMIUM CLOTH					■			■									■	
CHARCOAL SPORT CLOTH						■			■									■

■ Standard

Nissan has taken care to ensure that the digital colour swatches presented here are the closest possible representation of actual vehicle colours. Swatches may vary slightly due to viewing light or screen quality. Please see the actual vehicle and colours at your dealer.

## CHOOSE YOUR INTERIOR



Nissan Versa<sup>®</sup> SR shown in Charcoal Sport Cloth. U.S. instrumentation shown.

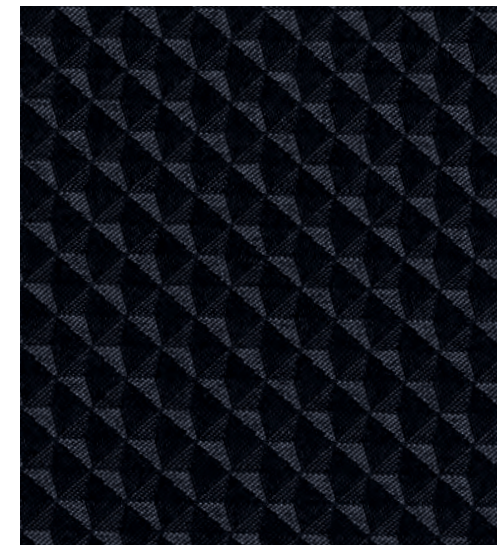
## BUYING AND OWNING

**Finance Options** Through Nissan Canada Finance, we offer many attractive lease and loan options that can be tailored to your individual needs. We have unique programs such as the Nissan Grad Program, Loyalty Program or the Nissan Advantage Program. Please visit our website [Nissan.ca/finance](https://www.nissan.ca/finance) to explore all of the options available. We have also made it easy to pre-qualify online. All of our programs come with competitive rates and terms. With our flexible options, driving home a new Nissan has never been easier. Consult your local Nissan Dealership for complete details.

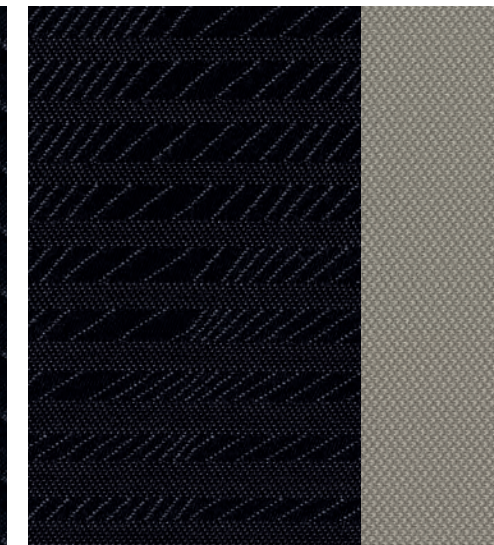
**No-Nonsense Warranty** Every 2021 Nissan is covered by a 3 year/60,000 km<sup>20</sup> Comprehensive New Vehicle Warranty, a 5 year/100,000 km<sup>20</sup> Powertrain Warranty, an 8 year/130,000 km<sup>20</sup> Emission OBD Warranty on selected components, and a 5 year/unlimited km Corrosion Perforation Warranty. As a Nissan owner, you'll also receive a 3 year Roadside Assistance program available to you 24 hours a day. Terms, conditions and exclusions apply. See your Warranty Information Booklet for complete details.

**Added Security Plan (ASP)** For ultimate peace of mind, consider the Nissan Added Security Plan. It's our commitment to be there for you, and to help you leave your worries behind. Different plans, available for both purchased and leased vehicles, let you tailor the coverage to your driving habits.

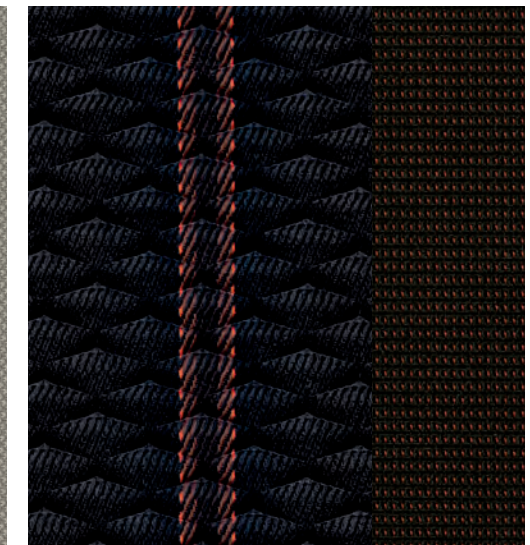
**Security+Plus™ Prepaid Maintenance Plan** The smart choice when it comes to maintaining your new Nissan. Honoured at all participating Nissan Dealers in Canada and the U.S., your vehicle is cared for by factory-trained technicians using Genuine Nissan Parts. And best of all, there's no worrying about price increases on parts or service in the future. A variety of plans are available. Ask your Dealer for details.



Charcoal Cloth  
S



Graphite Premium Cloth  
SV



Charcoal Sport Cloth  
SR



## CHOOSE YOUR TRIM LEVEL

### S MT

- 122-HP 1.6-litre DOHC 4-cylinder engine
- 5-speed manual transmission
- Cruise control
- Intelligent Forward Collision Warning<sup>21</sup>
- Intelligent Emergency Braking with Pedestrian Detection<sup>13</sup>
- Lane Departure Warning<sup>17</sup>
- High Beam Assist
- Review View Monitor<sup>22</sup>
- Rear Intelligent Emergency Braking<sup>14</sup>
- 15" steel wheels with full wheel covers
- Fog lights
- Chrome V-Motion grille
- Carbon-fibre look rear diffuser
- Air conditioning with in-cabin filter
- Sun visors with vanity mirrors
- Cloth seat trim
- Matte carbon-fibre look interior door trim
- Siri® Eyes Free<sup>4</sup>
- Bluetooth® Hands-free Phone System<sup>11</sup>
- Three USB ports<sup>3</sup>
- Streaming Audio via Bluetooth®<sup>11</sup>
- AM/FM audio system with four speakers
- Nissan Advanced Airbag System with dual-stage supplemental front airbags with seat-belt and occupant-classification sensors<sup>23</sup>
- Seat-mounted driver and front-passenger side-impact supplemental airbags<sup>23</sup>
- Seat-mounted rear-passenger side-impact supplemental airbags<sup>23</sup>
- Driver and front-passenger knee airbags<sup>23</sup>
- Roof-mounted curtain side-impact supplemental airbags for front and rear-seat outboard occupant head protection<sup>23</sup>
- Tire Pressure Monitoring System (TPMS) with Easy-Fill Tire Alert<sup>24,25</sup>

### S CVT INCLUDES SV 5-MT EQUIPMENT PLUS:

- Xtronic CVT® (Continuously Variable Transmission)
- Body-colour heated outside mirrors with LED turn signal indicators
- 60/40-split fold-down rear seats<sup>9</sup>



### SV INCLUDES S CVT EQUIPMENT PLUS:

- 16" Aluminum-alloy wheels
- Blind Spot Warning<sup>16</sup>
- Rear Cross Traffic Alert<sup>15</sup>
- Intelligent Driver Alertness<sup>26</sup>
- Body-colour exterior door handles
- Automatic Temperature Control
- Rear Door Alert<sup>27</sup>
- Driver's seat-mounted armrest
- Premium Cloth seat trim
- Heated front seats
- Chrome interior door handles
- 178 mm (7") Advanced Drive-Assist® Display<sup>7,8</sup>
- NissanConnect® 178 mm (7") touch-screen display<sup>7</sup>
- Apple CarPlay® integration<sup>4</sup>
- Android Auto™<sup>4</sup>
- SiriusXM® Radio with 3-month subscription included<sup>28</sup>
- Voice Recognition<sup>4</sup>



### SR INCLUDES SV EQUIPMENT PLUS:

- 17" Split 5-spoke aluminum-alloy wheels
- LED headlights with LED signature
- Dark chrome V-Motion grille
- Black-painted heated outside mirrors with LED turn signal indicators
- Body-colour rear spoiler
- Follow Me Home headlights
- Nissan Intelligent Key® with Push Button Ignition
- Remote Engine Start System<sup>10</sup>
- Sport Cloth seat trim
- Prima-Tex™-appointed dash trim
- Leather-wrapped steering wheel
- Leather-wrapped shift knob
- AM/FM audio system with six speakers





## CHOOSE YOUR ACCESSORIES



- A. Centre Console Storage Mats**  
Keep your valuables from going their own way.
- B. Centre Armrest with Storage**  
Relax, and give your arm a rest.
- C. Interior Accent Lighting**  
Add a warm glow to the mood.
- D. Illuminated Kick Plates**  
Fewer scuffs and a grand entry, every time.
- E. All-Season Trunk Area Protector**  
Because being a trunk isn't easy.
- F. Door Pocket Lighting**  
Shine a spotlight where you need it most.
- G. Clear Rear Bumper Protector**  
No one has to know you're protecting your bumper.
- H. All-Season Floor Mats**  
Bring on the weather.

### Additional Accessories:

- Carpeted Trunk Area Protector
- Frameless Prizm Rearview Mirror with Universal Remote
- First-aid Kit
- Door Sill Protectors
- Sliding Trunk Organizer<sup>18</sup>
- Hideaway Trunk Net<sup>18</sup>
- Portable Trunk Organizer<sup>18</sup>
- Shopping Bag Hooks
- Nissan Chrome Licence Plate Frame
- Nissan Valve Stem Caps
- Wheel Locks
- And More

See your Nissan dealer for details,  
or go to [accessories.nissan.ca](https://accessories.nissan.ca)

## GENUINE NISSAN ACCESSORIES

### Turn brand-new into all you

Every Genuine Nissan Accessory is custom-fit, custom-designed and durability-tested. Each one is backed by Nissan's 3-year/60,000-km (whichever occurs first) limited warranty (if installed by dealer at the time of purchase), and can be financed when installed by dealer at time of purchase. Terms, conditions, and exclusions apply. See your Warranty Information Booklet for complete details.



**Nissan Versa® SR** shown in Scarlet Ember with Chrome Trunk Accent, Exterior Ground Lighting, Side-Window Deflectors, Rear Spoiler (standard on SR), and Splash Guards.



## SPECIFICATIONS

Engine	S MT	S CVT	SV	SR
1.6-litre DOHC 16-valve 4-cylinder engine	■	■	■	■
122 HP @ 6,300 rpm				
114 lb.-ft. of torque @ 4,000 rpm				
Continuously Variable Valve Timing Control System (CVTCS) on intake and exhaust valves	■	■	■	■
Sequential multi-point fuel injection	■	■	■	■
Nissan Direct Ignition System	■	■	■	■
Platinum-tipped spark plugs	■	■	■	■
Electronic drive-by-wire throttle	■	■	■	■

Drivetrain	S MT	S CVT	SV	SR
Front engine/Front-Wheel Drive	■	■	■	■
5-speed manual transmission	■			
Xtronic CVT® (Continuously Variable Transmission)		■	■	■

Brakes	S MT	S CVT	SV	SR
Front vented disc brakes/rear drum brakes	■	■	■	■
Anti-lock Braking System (ABS)	■	■	■	■
Electronic Brake force Distribution (EBD)	■	■	■	■
Brake Assist <sup>29</sup>	■	■	■	■

Suspension/Steering	S MT	S CVT	SV	SR
Independent strut front suspension with stabilizer bar	■	■	■	■
Torsion beam rear suspension with integrated stabilizer bar	■	■	■	■
Vehicle-speed-sensitive electric power steering	■	■	■	■

Driver Assistance Technologies	S MT	S CVT	SV	SR
Cruise control	■	■	■	■
Intelligent Forward Collision Warning <sup>21</sup>	■	■	■	■
Intelligent Emergency Braking with Pedestrian Detection <sup>13</sup>	■	■	■	■
Lane Departure Warning <sup>17</sup>	■	■	■	■
High Beam Assist	■	■	■	■
Blind Spot Warning <sup>16</sup>			■	■
Rear Cross Traffic Alert <sup>15</sup>			■	■
RearView Monitor <sup>22</sup>	■	■	■	■
Rear Intelligent Emergency Braking <sup>14</sup>	■	■	■	■
Hill start assist	■	■	■	■
Intelligent Driver Alertness <sup>26</sup>			■	■
Vehicle Dynamic Control (VDC) <sup>30</sup> with Traction Control System (TCS)	■	■	■	■

Wheels/Tires	S MT	S CVT	SV	SR
15" x 6.5" steel wheels with full wheel covers	■	■		
16" x 6.0" aluminum-alloy wheels			■	
17" x 6.5" split 5-spoke aluminum-alloy wheels				■
195/65R15 all-season tires	■	■		
205/55R16 all-season tires			■	
205/50R17 all-season tires				■

■ Standard  
□ Optional

Exterior Features	S MT	S CVT	SV	SR
Automatic on/off headlights	■	■	■	■
Halogen projector headlights	■	■	■	■
LED headlights with LED signature				■
Fog lights	■	■	■	■
Chrome V-Motion grille	■	■	■	■
Dark chrome V-Motion grille				■
Dual power outside mirrors	■	■	■	■
Heated outside mirrors with LED turn signal indicators		■	■	■
Black outside mirrors	■			
Body-colour outside mirrors		■	■	
Black-painted outside mirrors	■	■		
Black door handles				■
Body-colour door handles			■	■
Body-colour rear spoiler				■
Carbon-fibre look rear diffuser	■	■	■	■

Comfort/Convenience	S MT	S CVT	SV	SR
Air conditioning with in-cabin microfilter	■	■	■	■
Automatic Temperature Control			■	■
Power windows with driver's one-touch auto-up/down	■	■	■	■
Power door locks with auto-locking feature	■	■	■	■
Rear Door Alert <sup>27</sup>			■	■
Follow Me Home headlights				■
Remote Keyless Entry with Push Button Ignition	■	■	■	■
Nissan Intelligent Key® with Push Button Ignition				■
Remote Engine Start System <sup>10</sup>				■
Tilt and telescoping steering column	■	■	■	■
Sun visors with vanity mirrors and extensions	■	■	■	■
Map lights with key-linked illuminated entry	■	■	■	■
12-volt DC power outlet	■	■	■	■

Seating/Appointments	S MT	S CVT	SV	SR
6-way manual adjustable driver's seat	■	■	■	■
4-way manual adjustable front-passenger's seat	■	■	■	■
Driver's seat-mounted armrest			■	■
Cloth seat trim	■	■		
Premium Cloth seat trim			■	
Sport Cloth seat trim				■
Prima-Tex™-appointed dash trim				■
Heated front seats			■	■
Leather-wrapped steering wheel				■
Leather-wrapped shift knob				■
Matte carbon-fibre look interior door trim	■	■	■	■
Chrome interior door handles			■	■
60/40-split fold-down rear seats		■	■	■

Infotainment	S MT	S CVT	SV	SR
Advanced Drive-Assist® Display <sup>7,8</sup>			■	■
178 mm (7") touch-screen display <sup>7</sup>	■	■		

Infotainment (continued)	S MT	S CVT	SV	SR
NissanConnect® 178 mm (7") touch-screen display <sup>7</sup>			■	■
Apple CarPlay® integration <sup>4</sup>			■	■
Android Auto™ <sup>4</sup>			■	■
Siri® Eyes Free <sup>4</sup>	■	■	■	■
Hands-free Text Messaging Assistant <sup>5</sup>	■	■	■	■
Bluetooth® Hands-free Phone System <sup>11</sup>	■	■	■	■
AM/FM audio system with four speakers	■	■	■	
AM/FM audio system with six speakers				■
SiriusXM® Radio with 3-month subscription included <sup>28</sup>			■	■
Voice Recognition <sup>4</sup>			■	■
Auxiliary audio input jack <sup>3</sup>	■	■	■	■
Three USB ports <sup>3</sup>	■	■	■	■
Streaming Audio via Bluetooth® <sup>11</sup>	■	■	■	■
Steering wheel-mounted audio controls	■	■	■	■

Safety/Security	S MT	S CVT	SV	SR
Nissan Advanced Airbag System with dual-stage supplemental front airbags with seat-belt and occupant-classification sensors <sup>23</sup>	■	■	■	■
Seat-mounted driver and front-passenger side-impact supplemental airbags <sup>23</sup>	■	■	■	■
Seat-mounted rear passenger side-impact supplemental airbags <sup>23</sup>	■	■	■	■
Driver and front-passenger supplemental knee airbags <sup>23</sup>	■	■	■	■
Roof-mounted curtain side-impact supplemental airbags for front- and rear-seat outboard occupant head protection <sup>23</sup>	■	■	■	■
3-point ALR/ELR seat belt system (ELR only for driver)	■	■	■	■
Front seat belts with pretensioners and load limiters	■	■	■	■
LATCH System (Lower Anchors and Tethers for Children)	■	■	■	■
Zone Body construction with front and rear crumple zones	■	■	■	■
Hood buckling creases and safety stops	■	■	■	■
Child safety rear door locks	■	■	■	■
Power windows lock-out button	■	■	■	■
Energy-absorbing steering column	■	■	■	■
Tire Pressure Monitoring System (TPMS) with individual tire pressure display and Easy-Fill Tire Alert <sup>24,25</sup>	■	■	■	■
Nissan Vehicle Immobilizer System	■	■	■	■

Nissan's environmental action plan focuses on several key areas. In addition to increasing production of Zero Emission vehicles like the 100% electric LEAF®, we're improving fuel efficiency across our lineup, and reducing the environmental impact of manufacturing through energy-efficient practices in our plants.



## DIMENSIONS/CAPACITIES/WEIGHTS/FUEL

Exterior Dimensions - mm (inches)	S			SV			SR		
	S	SV	SR	S	SV	SR	S	SV	SR
Wheelbase	2620 (103.1)	2620 (103.1)	2620 (103.1)						
Overall length	4495 (177)	4495 (177)	4495 (177)						
Overall width	1739.7 (68.5)	1739.7 (68.5)	1739.7 (68.5)						
Overall height	1457.2 (57.3)	1457.2 (57.3)	1465 (57.7)						
Track width									
Front	1520 (59.8)	1520 (59.8)	1505 (59.3)						
Rear	1530 (60.2)	1530 (60.2)	1515 (59.6)						

Interior Dimensions (front/rear) - mm (inches)				
Head room	1003 (39.5) / 922 (36.3)			
Leg room	1130 (44.5) / 787 (31)			
Hip room	1293 (50.9) / 1273 (50.1)			
Shoulder room	1349 (53.1) / 1361 (53.6)			

Capacities				
Seating capacity	5			
Interior passenger volume - L (cu. ft.)	2519 (88.9)			
	S MT	S CVT	SV	SR
Cargo volume - L (cu. ft.)	416 (14.7)	425 (15)	425 (15)	425 (15)
Fuel tank - L (Imp. gal.)	41 (9)	41 (9)	41 (9)	41 (9)

Aerodynamics - Cd				
	S MT	S CVT	SV	SR
Drag coefficient	0.32	0.32	0.32	0.29

Curb Weights - kg (lbs.)				
	S	SV	SR	
<b>Base total</b>				
Manual transmission	1170 (2579)	-	-	
Xtronic CVT®	1194 (2633)	1204 (2654)	1221 (2692)	

2021 Fuel Consumption Estimates - L/100 km (MPG) <sup>2</sup>				
<b>City/Hwy/Combined L/100 km</b>				
Manual transmission	8.6 (33)	-	-	
	6.7 (42)			
	7.7 (37)			
Xtronic CVT®	7.4 (38)	7.4 (38)	7.4 (38)	
	5.9 (48)	5.9 (48)	5.9 (48)	
	6.7 (42)	6.7 (42)	6.7 (42)	

Actual mileage may vary with driving conditions - use for comparison only.

## NISSAN VERSA®

Isn't it time you were passionate about the vehicle you drive?  
Welcome to the 2021 Versa.

Follow Nissan Canada on:

