



Nissan Intelligent Mobility moves you one step ahead. In cars that feel like an extension of you, helping you see more and sense more, reacting with you, and sometimes even for you. Nissan Intelligent Mobility is about a better future — moving us to a world that's safer, more sustainable, and exciting.



LEAF®
2023

NISSAN LEAF®

Isn't it time you were passionate about the vehicle you drive?
Welcome to the 2023 Nissan LEAF.®

Follow Nissan Canada on:



Nissan's environmental action plan focuses on several key areas. In addition to increasing production of Zero Tailpipe Emission vehicles like the 100% electric LEAF,® we're improving fuel efficiency across our lineup, and reducing the environmental impact of manufacturing through energy-efficient practices in our plants.



The possibilities are electric

The joy never ends with Nissan LEAF.® Get up to 342 kilometres off a single charge.¹ Stay connected with your compatible smartphone on the big screen.^{2,3,4} And travel with confidence, knowing a standard suite of Nissan Safety Shield® 360 features are looking out for you.^{5,6}



RANGE UP TO
240 KM
40 KWH BATTERY¹

RANGE UP TO
342 KM
60 KWH BATTERY¹



Feel the rush of instant acceleration

It's a thrill you never saw coming. Nissan LEAF's 100% electric drivetrain delivers instant acceleration as soon as you touch the pedal. Turn the wheel and the fun continues, with a battery pack that sits low in the chassis, letting you hug the road.



e-Pedal — One-pedal driving



Imagine having the option to drive with one pedal. Just press down for an instant rush and ease off to slow down. It's not only fun, but it also encourages you to drive more efficiently.¹ Of course, going back to driving with two pedals is as easy as flipping a switch.⁷

U.S. model shown.

ProPILOT® Assist⁸

Helps keep you centred — even in gentle curves⁸

Helps maintain your preset speed and distance⁸

Can even come to a complete stop⁸



U.S. instrumentation shown.

Commuting has never come this easy



With ProPILOT Assist, the Nissan LEAF[®] helps out with daily highway driving — assisting you by following the car ahead at a preset distance and helping keep you centred in your lane. It can even bring you to a full stop based on the traffic flow and can bring you back up to speed when traffic starts moving again. It all adds up to a more confident, enjoyable drive.⁸



Standard Nissan Safety Shield® 360 and driver assist technologies

In one of the most advanced Nissan vehicles ever, you can expect confidence from an array of driver assist and safety features.^{5,6}

Safety Shield 360 includes:

- Intelligent Emergency Braking with Pedestrian Detection⁹
- Rear Automatic Braking¹⁰
- Rear Cross Traffic Alert¹¹
- Blind Spot Warning¹²
- Lane Departure Warning¹³
- High Beam Assist

Nissan LEAF® also comes standard with:

- Intelligent Blind Spot Intervention¹²
- Intelligent Lane Intervention¹³
- Intelligent Forward Collision Warning¹⁴



There's nothing like seeing it on the big screen

People to see? Places to be? Just ask Siri.® Equipped with Siri® voice control, standard Apple CarPlay® brings your contacts, favourite messaging apps, Apple Music® playlists, Apple Maps, and more on board to your Nissan LEAF. Simply plug in your compatible iPhone® and go.^{2,4,15,16}



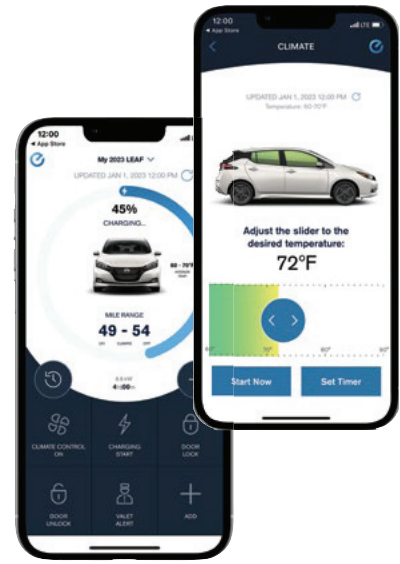
Talk to Google on Android Auto and get things done with your voice. Easily send messages, get directions, control media, and more. Just say, "Hey Google" or, in compatible cars, long-press the voice control button on your steering wheel to get started.^{2,4,15,16}





Get your day started with NissanConnect® EV & Services

Your Nissan LEAF® is powered up and you're connected — and you haven't even stepped out of the house yet. Simply use the NissanConnect® EV & Services app on your compatible smartphone to remotely lock and unlock your doors, start charging, heat or cool your cabin, and more.^{2,4,17}



U.S. instrumentation shown.

Connect the way you want

With NissanConnect® technologies, you can tailor how you stay in touch.² Plug in and access your compatible smartphone.⁴ Nissan Door to Door Navigation makes driving to your next destination seamless.¹⁶ Bluetooth® and hands-free texting makes it easy to connect with your world.^{15,20} And you'll stay charged up with three standard USB-A ports and a standard USB-C port.⁴

Charging at home

Charge up overnight when electricity rates are often lower, using the FLO® Home X5 residential charging station. It allows you to log in to a secured online portal to track usage and configure your settings.¹⁸



FLO® HOME X5 CHARGER

At-Home 240-V Charging¹⁸

60 kWh Battery:
Range up to 342 km on Nissan LEAF SV PLUS and SL PLUS¹
Approx. 11 Hours = Full Charge¹⁹

40 kWh Battery:
Range up to 240 km on Nissan LEAF SV¹
Approx. 7.5 Hours = Full Charge¹⁹



Range up to 342 km as shown on Nissan LEAF® SV PLUS.¹

Charging on the go

An ever-expanding network of public EV charging stations and a standard 110-V/240-V EVSE portable charge cable means you've got a lot of options for your next charge. Just use the available menu on your Nissan LEAF's centre touch-screen display. You can even filter for the type of charger you are looking for, type of payment method, and more.^{3,21,22}



Range up to 342 km as shown on Nissan LEAF® SV PLUS.¹

Public DC Quick Charging^{21,22}

60 kWh Battery:
Range up to 342 km on Nissan LEAF SV PLUS and SL PLUS¹
Approx. 45 Minutes = 80% Charge¹⁹ (100 kW)
Approx. 60 Minutes = 80% Charge¹⁹ (50 kW)

40 kWh Battery:
Range up to 240 km on Nissan LEAF SV¹
Approx. 40 Minutes = 80% Charge¹⁹ (50 kW)

Grab hold of a driver-centric design

With room for up to five and perks like heated front and rear seats and a heated steering wheel, the Nissan LEAF® shows how uncompromising driving electric can be. A “floating” touch-screen display puts your compatible iPhone® on centre stage with Apple CarPlay.^{2,3,4} Top it off with features like a telescoping D-shaped steering wheel, a distinctive centre console, and a super-quiet, noise-insulated cabin, and it's clear this interior was designed with you in mind.

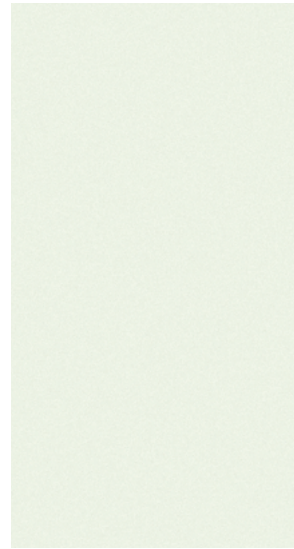
Customizable
digital display²³

Intuitive drive
selector

D-shaped
steering wheel

Noise-insulated
cabin

CHOOSE YOUR COLOUR



Pearl White TriCoat²⁴ QAB



Gun Metallic²⁴ KAD

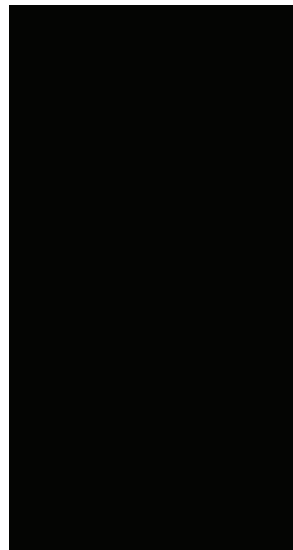


Scarlet Ember Tintcoat²⁴ NBL

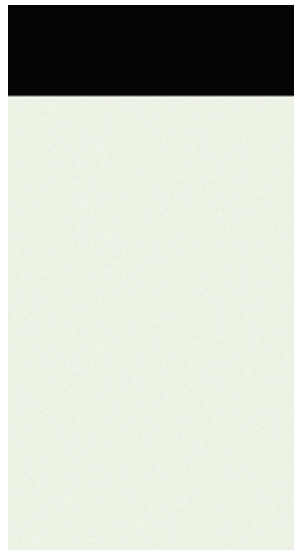
	SV	SV PLUS	SL PLUS	SV	SV PLUS	SL PLUS	SV	SV PLUS	SL PLUS
Black Cloth	<input type="checkbox"/>	<input type="checkbox"/>	<input type="checkbox"/>	<input type="checkbox"/>	<input type="checkbox"/>	<input type="checkbox"/>	<input type="checkbox"/>	<input type="checkbox"/>	<input type="checkbox"/>
Black Leather ²⁵	<input type="checkbox"/>	<input type="checkbox"/>	<input checked="" type="checkbox"/>	<input type="checkbox"/>	<input type="checkbox"/>	<input type="checkbox"/>	<input type="checkbox"/>	<input type="checkbox"/>	<input type="checkbox"/>



Deep Blue Pearl²⁴ RAY



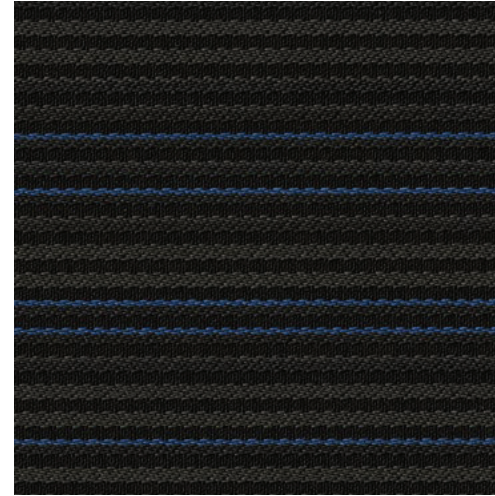
Super Black KH3



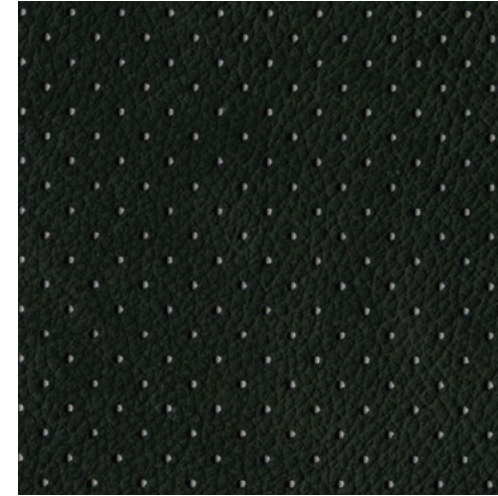
Two-tone Pearl White TriCoat/Super Black²⁴ XBJ

	SV	SV PLUS	SL PLUS	SV	SV PLUS	SL PLUS	SV	SV PLUS	SL PLUS
Black Cloth	<input type="checkbox"/>	<input type="checkbox"/>	<input type="checkbox"/>	<input type="checkbox"/>	<input type="checkbox"/>	<input type="checkbox"/>	<input type="checkbox"/>	<input type="checkbox"/>	<input type="checkbox"/>
Black Leather ²⁵	<input type="checkbox"/>	<input type="checkbox"/>	<input checked="" type="checkbox"/>	<input type="checkbox"/>	<input type="checkbox"/>	<input type="checkbox"/>	<input type="checkbox"/>	<input type="checkbox"/>	<input type="checkbox"/>

CHOOSE YOUR INTERIOR



Black Cloth
SV | SV Plus



Black Leather²⁵
SL Plus

■ Standard

Nissan has taken care to ensure that the digital colour swatches presented here are the closest possible representation of actual vehicle colours. Swatches may vary slightly due to viewing light or screen quality. Please see the actual vehicle and colours at your dealer.

BUYING AND OWNING

Finance Options Through Nissan Canada Finance, we offer many attractive lease and loan options that can be tailored to your individual needs. Please visit our website [Nissan.ca/finance](https://www.nissan.ca/finance) to explore all of the options available. We have also made it easy to pre-qualify online. With our flexible options, driving home a new Nissan has never been easier. Consult your local Nissan Dealership for complete details.

No-Nonsense Warranty Every 2023 Nissan is covered by a 3 year/60,000 km²⁶ Comprehensive New Vehicle Warranty, a 5 year/100,000 km²⁶ Powertrain Warranty, an 8 year/130,000 km²⁶ Emission OBD Warranty on selected components, and a 5 year/unlimited km Corrosion Perforation Warranty. As a Nissan owner, you'll also receive a 3 year Roadside Assistance program available to you 24 hours a day. Terms, conditions, and exclusions apply. See your Warranty Information Booklet for complete details.

Added Security Plan (ASP) For ultimate peace of mind, consider the Nissan Added Security Plan. It's our commitment to be there for you, and to help you leave your worries behind. Different plans, available for both purchased and leased vehicles, let you tailor the coverage to your driving habits.

Security+Plus[®] Prepaid Maintenance Plan The smart choice when it comes to maintaining your new Nissan. Honoured at all participating Nissan Dealers in Canada and the U.S., your vehicle is cared for by factory-trained technicians using Genuine Nissan Parts. And best of all, there's no worrying about price increases on parts or service in the future. A variety of plans are available. Ask your Dealer for details.



CHOOSE YOUR TRIM LEVEL

SV

- 40 kWh lithium-ion battery
- 110 kW AC synchronous electric motor with 147 HP and 236 lb.-ft. of torque
- 6.6 kW onboard charger
- Portable charge cable (110-V/240-V)
- Quick Charge port — 50 kW (CHAdeMO)
- e-Pedal⁷
- Electronic parking brake
- ProPILOT Assist⁸
- Intelligent Forward Collision Warning¹⁴
- Intelligent Emergency Braking with Pedestrian Detection⁹
- Intelligent Lane Intervention¹³
- Intelligent Blind Spot Intervention¹²
- Rear Cross Traffic Alert¹¹
- Intelligent Around View[®] Monitor²⁷
- Rear Automatic Braking¹⁰
- Intelligent Driver Alertness²⁸
- High Beam Assist
- 17" Aluminum-alloy wheels
- Illuminated grille emblem
- LED headlights with LED signature Daytime Running Lights
- Fog lights
- Heated outside mirrors
- Hybrid heater system
- Heated front and rear seats
- Removable cargo cover
- Heated leather-wrapped steering wheel
- 178 mm (7") Information display (in gauge cluster)²³
- NissanConnect[®] 203 mm (8") colour display with multi-touch control³
- Nissan Door to Door Navigation with Premium Traffic¹⁶
- NissanConnect[®] EV with Services powered by SiriusXM with trial access to 3-year EV and Select and 6-month Premium packages²
- Apple CarPlay[®] integration²
- Android Auto[™] compatibility²
- Automatic Temperature Control
- Nissan Intelligent Key[®] with Push Button Start
- Rear Door Alert²⁹
- SiriusXM Radio with 3-month subscription included³⁰
- SiriusXM Traffic and Travel Link with 3-month trial access³⁰
- AM/FM audio system with six speakers
- Three USB-A ports and one USB-C port⁴



SV PLUS INCLUDES SV EQUIPMENT PLUS:

- 60 kWh lithium-ion battery
- 160 kW AC synchronous electric motor with 214 HP and 250 lb.-ft. of torque
- High-output Quick Charge port — 100 kW (CHAdeMO)
- Front bumper chin spoiler



SL PLUS INCLUDES SV PLUS EQUIPMENT PLUS:

- Outside mirrors with integrated LED turn signal indicators
- Leather-appointed seats
- Bose Energy Efficient Series Premium Audio System with seven speakers
- Universal garage-door opener



Images may show additional available equipment.

GENUINE NISSAN ACCESSORIES

Turn brand-new into all you

Every Genuine Nissan Accessory is custom-fit, custom-designed, and durability-tested. Each one is backed by Nissan's 3-year/60,000 km (whichever occurs first) limited warranty (if installed by dealer at the time of new vehicle purchase) and can be financed when installed by dealer at time of new vehicle purchase.

See your Nissan dealer for details, or go to accessories.nissan.ca



U.S. instrumentation shown.



Nissan LEAF® SV PLUS shown in Pearl White TriCoat with Chrome Rear Bumper Protector and Splash Guards (4-piece set).

A. Kick Plates

For a grand entry every time.

B. All-Season Floor Mats — High Wall Liners

No sleet, snow, or mud shall mess up your ride.

C. Clear Front Bumper Charging Port Protector

Help keep your front bumper scratch-free from everyday charging.

D. Cargo Net³¹

Keep things from rolling around and keep them handy when you need them.

Additional Accessories:

- Cargo Area Protector
- Removable Tote Cargo Organizer³¹
- Frameless Rearview Mirror w/ Universal Remote
- Seat Belt Extender
- Illuminated Ash Cup
- Emergency Road Kit
- And More



Room to do more

No need to sacrifice space or comfort. Nissan LEAF has a modern interior with impressive cargo space. With the rear seats down, you'll find up to 850 L (30 cu. ft.) of cargo space, so go ahead and bring a bike on your next adventure. With the spacious trunk and up to 668 L (23.6 cu. ft.) of cargo space, you've got plenty of room for gear without sacrificing seating. Need to bring people and cargo? Just fold down one of the 60/40 rear seats and fit both.³¹

SPECIFICATIONS

Electric Motor	SV	SV PLUS	SL PLUS
110 kW AC synchronous electric motor	■		
—Horsepower — 147 HP	■		
—Torque — 236 lb.-ft.	■		
160 kW AC synchronous electric motor		■	■
—Horsepower — 214 HP		■	■
—Torque — 250 lb.-ft.		■	■
40 kWh lithium-ion battery	■		
60 kWh lithium-ion battery		■	■
6.6 kW onboard charger	■	■	■
Portable charge cable (110-V/240-V)	■	■	■
Quick Charge port — 50 kW (CHAdeMO)	■		
High-output Quick Charge port — 100 kW (CHAdeMO)		■	■

Drivetrain			
Regenerative braking system	■	■	■
Eco Mode	■	■	■
B-mode	■	■	■

Brakes			
Front and rear vented disc brakes	■	■	■
Anti-lock Braking System (ABS)	■	■	■
Electronic Brake force Distribution (EBD)	■	■	■
Brake Assist ²²	■	■	■
Electronic parking brake	■	■	■

Suspension/Chassis Bracing/Steering			
Independent strut front suspension	■	■	■
Torsion beam rear suspension	■	■	■
Front and rear stabilizer bars	■	■	■
Vehicle-speed-sensitive electric power steering	■	■	■

Driver Assistance Technologies			
e-Pedal ⁷	■	■	■
ProPILOT Assist ⁸ Steering Assist	■	■	■
—Intelligent Cruise Control ¹¹ with Full-Speed Range and Hold	■	■	■
Intelligent Forward Collision Warning ¹⁴	■	■	■
Intelligent Emergency Braking with Pedestrian Detection ⁹	■	■	■
Intelligent Lane Intervention ¹⁵	■	■	■
Intelligent Blind Spot Intervention ¹²	■	■	■
Rear Cross Traffic Alert ¹³	■	■	■
Intelligent Around View [®] Monitor ²⁷	■	■	■
Rear Sonar System ¹⁴	■	■	■
Rear Automatic Braking ¹⁰	■	■	■
High Beam Assist	■	■	■
Active Ride Control	■	■	■
Intelligent Trace Control ¹⁶	■	■	■
Hill start assist	■	■	■
Intelligent Driver Alertness	■	■	■
Vehicle Dynamic Control [®] (VDC) ¹⁸ with Traction Control System (TCS)	■	■	■

Wheels/Tires			
17" Aluminum-alloy wheels	■	■	■
P215/50R17 Low rolling resistance all-season tires	■	■	■
Tire repair kit	■	■	■

Exterior Features			
LED headlights with LED signature Daytime Running Lights	■	■	■
Intelligent Automatic Headlights	■	■	■
Fog lights	■	■	■

Exterior Features (continued)	SV	SV PLUS	SL PLUS
Illuminated grille emblem	■	■	■
Aerodynamic underbody panels and rear diffuser	■	■	■
Front bumper chin spoiler	■	■	■
Aerodynamic rear spoiler	■	■	■
Aerodynamic side rear spoiler	■	■	■
Dual power outside mirrors	■	■	■
Heated outside mirrors	■	■	■
Outside mirrors with integrated LED turn signal indicators	■	■	■
Charge port with light and lock	■	■	■
UV-reducing solar glass	■	■	■

Comfort/Convenience			
Automatic Temperature Control	■	■	■
Hybrid heater system	■	■	■
Nissan Intelligent Key [®] with Push Button Start	■	■	■
12-volt DC power outlet ⁴	■	■	■
Power door locks with auto-locking feature	■	■	■
Power windows with driver's window one-touch auto-up/down	■	■	■
Tilt and telescoping steering column	■	■	■
Auto-dimming rearview mirror	■	■	■
Universal garage-door opener	■	■	■
Variable intermittent windshield wipers and intermittent rear-window wiper	■	■	■
Rear Door Alert ²⁹	■	■	■
Front map lights	■	■	■
Sun visors with vanity mirrors and extensions	■	■	■
Two cup holders	■	■	■
Four bottle holders	■	■	■
Removable cargo cover	■	■	■

Seating/Appointments			
8-way power adjustable driver's bucket seat with 2-way adjustable lumbar	■	■	■
4-way manual adjustable front passenger's bucket seat	■	■	■
Cloth seat trim	■	■	■
Leather-appointed seats	■	■	■
Heated front and rear seats	■	■	■
60/40-split fold-down rear seats	■	■	■
Leather-wrapped steering wheel	■	■	■
Heated steering wheel	■	■	■

Infotainment			
178 mm (7") Information display (in gauge cluster) ²⁵	■	■	■
NissanConnect [®] 203 mm (8") colour display with multi-touch control ¹	■	■	■
Nissan Door to Door Navigation System with Premium Traffic ⁶	■	■	■
NissanConnect [®] EV with Services powered by SiriusXM with trial access to 3-year EV and Select and 6-month Premium packages ²	■	■	■
Voice Recognition ¹⁶	■	■	■
Apple CarPlay [®] integration ³	■	■	■
Android Auto™ compatibility ⁷	■	■	■
SiriusXM Traffic and Travel Link with 3-month trial access ³⁰	■	■	■
Bluetooth [®] Hands Free Phone System ²⁰	■	■	■
Hands-free Text Messaging Assistant ¹⁵	■	■	■
AM/FM audio system with six speakers	■	■	■
Bose Energy Efficient Series Premium Audio System with seven speakers	■	■	■
SiriusXM Radio with 3-month subscription included ³⁰	■	■	■
Streaming Audio via Bluetooth [®] 20	■	■	■
Three USB-A ports and one USB-C port ⁴	■	■	■
Steering wheel-mounted audio controls	■	■	■

■ Standard

Safety/Security	SV	SV PLUS	SL PLUS
Nissan Advanced Airbag System with dual-stage supplemental front airbags with seat belt and occupant classification sensors ²⁷	■	■	■
Seat-mounted side-impact supplemental airbags for front- and rear-seat outboard occupants ²⁷	■	■	■
Driver and front-passenger supplemental knee airbags ²⁷	■	■	■
Roof-mounted curtain supplemental airbags with rollover sensor for side-impact head protection for front- and rear-seat outboard occupants ²⁷	■	■	■
3-point ALR/ELR passenger seat belt system (ELR for driver)	■	■	■
Front seat belts with pretensioners and load limiters	■	■	■
LATCH System (Lower Anchors and Tethers for CHildren)	■	■	■
Tire Pressure Monitoring System (TPMS) with Easy-Fill Tire Alert ^{38,39}	■	■	■
Nissan Vehicle Immobilizer System	■	■	■
Vehicle Security System	■	■	■

Dimensions			
Exterior — mm (inches)			
Wheelbase	2700 (106.3)		
Overall length/width	4480 (176.4)/1790 (70.5)		
Overall height	1565 (61.6) — SV		
	1575 (62.0) — SV PLUS, SL PLUS		
Track width (front/rear)	1530 (60.2)/1545 (60.8)		
Aerodynamics — Cd			
Drag coefficient	0.28		

Capacities			
Interior (front/rear) — mm (inches)			
Head room	1045 (41.2)/946 (37.3)		
Leg room	1070 (42.1)/851 (33.5)		
Hip room	1313 (51.7)/1271 (50.0)		
Shoulder room	1378 (54.3)/1334 (52.5)		

Curb Weights — kg (lbs.)	SV	SV PLUS	SL PLUS
Base total	1620 (3572)	1773 (3909)	1782 (3929)
Battery Charging Times ¹⁹			
	SV	SV PLUS/SL PLUS	
100% capacity (240-V / AC) ¹⁹	7.5 hrs	11 hrs	
80% capacity (100 kW / DC) ¹⁹	—	Approx. 45 Min.	
80% capacity (50 kW / DC) ¹⁹	Approx. 40 Min	Approx. 60 Min.	

2023 Range/Fuel Economy Estimates	SV	SV PLUS/SL PLUS
Range — km (miles) ¹	240 (149)	342 (212)
City/Hwy — Le/100 km (MPGe) ⁴⁰	1.9(148)/2.4(119)	1.9(145)/2.4(118)
¹ Actual mileage may vary with driving conditions — use for comparison only.		

¹2023 range of 240 kilometres (149 miles) for Nissan LEAF SV and 342 kilometres (212 miles) for Nissan LEAF SV PLUS and SL PLUS. Actual range may vary based on driving conditions. Use for comparison only. ²Feature availability is dependent on vehicle model, trim level, packaging and options. Compatible connected device may be required and feature availability may be dependent on device's capability. Refer to device's Owner's Manual for details. Late availability for some features. Driving is serious business and requires your full attention. Only use features and connected devices when safe and legal to do so. Some features, including automatic crash notification and SOS, are dependent upon the telematics device being in operative condition, its ability to connect to a wireless network, compatible wireless network availability, navigation map data and GPS satellite signal receptions, the absence of which can limit or prevent the ability to reach Customer Care or receive support. GPS mapping may not be detailed in all areas or reflect current road status. Never program GPS while driving. Only use Remote Home features in accordance with any laws, rules or ordinances in effect in your vehicle's location. Some services and features are provided by independent companies not within Nissan's control. **Should service provider terminate or restrict service or features, service or features may be suspended or terminated without notice or with no liability to Nissan or its partners or agents.** Services and features may require compatible cellular network provided by independent companies not within Nissan or its partners' or agents' control. Cellular network signal strength may vary and may not be available in all areas or at all times. Services and features may not function if cellular network is unavailable, restricted or terminated. Nissan and its partners or agents are not responsible for associated costs or other third party charges that may be required for continued operation due to cellular network unavailability, restriction, or termination (including equipment replacements/upgrades, if available, or roaming charges on alternative networks). Technology is evolving, and changes by independent companies are not within Nissan's or its partners' or agents' control. Enrollment, owner consent, personal identification number (PIN), and subscription agreement may be required to receive full suite of features and services. Trial periods (if applicable) begin on the date of vehicle purchase or lease of a new Nissan. Trial periods may be subject to change at any time and may be subject to early termination without notice. Required subscriptions may be sold separately for each available feature or service after trial period ends, and may continue until you call service provider to cancel. Installation costs, one-time activation fee, other fees and taxes may apply. Fees and programming subject to change. Feature may be subject to age restrictions in some areas. Subscriptions governed by service provider's subscription agreement, terms and conditions and privacy statements available at service provider's website. Text rates or data usage may apply. The Nissan names, logos and slogans are trademarks owned by or licensed to Nissan Motor Co. Ltd. or its North American subsidiaries. Other trademarks and trade names are those of their respective owners. **For important safety information, system limitations, and additional operating and feature information, see Dealer or Owner's Manual.** ³Driving is serious business and requires your full attention. If you have to use the feature while driving, exercise extreme caution at all times so full attention may be given to vehicle operation. ⁴Driving is serious business and requires your full attention. If you have to use the connected device while driving, exercise extreme caution at all times so full attention may be given to vehicle operation. Smartphone or other external device not included. ⁵Availability of features vary by vehicle model year, model, trim level, packaging and options. Please see Owner's Manual for important feature information. ⁶Nissan advanced safety technologies can't prevent all collisions or warn in all situations. See Owner's Manual for important safety information. ⁷Monitor traffic conditions and use conventional brake as needed to prevent collisions. See Owner's Manual for safety information. ⁸ProPILOT Assist cannot prevent collisions. It is the driver's responsibility to be in control of the vehicle at all times. Always monitor traffic conditions and keep both hands on the steering wheel. System depends on when lane markings are detected. Does not function in all weather, traffic and road conditions. System has limited control capability and the driver may need to steer, brake or accelerate at any time to maintain safety. See Owner's Manual for safety information. ⁹Intelligent Emergency Braking with Pedestrian Detection cannot prevent all collisions and may not provide warning or braking in all conditions. Driver should monitor traffic conditions and brake as needed to prevent collisions. See Owner's Manual for safety information. ¹⁰Rear Automatic Braking cannot prevent all collisions and may not provide warning or braking in all conditions. Driver should always turn and check surroundings before driving and brake as needed to prevent collisions. See Owner's Manual for safety information. ¹¹Rear Cross Traffic Alert may not detect all vehicles. See Owner's Manual for safety information. ¹²Blind Spot Warning and Intelligent Blind Spot Intervention cannot prevent all collisions and may not detect every object or warn in all situations. Driver should always turn and look before changing lanes. See Owner's Manual for safety information. ¹³Lane Departure Warning and Intelligent Lane Intervention only operate when lane markings are able to be detected. See Owner's Manual for safety information. ¹⁴Intelligent Forward Collision Warning cannot prevent collisions. See Owner's Manual for safety information. ¹⁵Use the text messaging feature after stopping your vehicle in a safe location if you have to use the feature while driving, exercise extreme caution at all times so full attention may be given to vehicle operation. Compatible smartphone required. Text rates and/or data usage may apply. ¹⁶Never program while driving. GPS mapping may not be detailed in all areas or reflect current road status. ¹⁷Heating or cooling of the cabin while vehicle is charging may decrease range or extend charging time. See Owner's Manual for safety information. ¹⁸240-V home charging dock sold separately. Not a Nissan product. Some chargers may not be compatible with your LEAF. Contact charger manufacturer before purchase for information on compatibility and warranty. Nissan does not warrant and is not responsible for loss, including consequential, incidental, or other damages caused by charger defects, charger incompatibility, or installation services. ¹⁹Approximate time, with available 240-V home charging dock (sold separately). Charging time and capacity may vary based on battery temperature. ²⁰Availability of specific features is dependent upon the phone's Bluetooth[®] support. Please refer to your phone Owner's Manual for details. Bluetooth[®] word mark and logos are owned by Bluetooth SIG, Inc., and any use of such marks by Nissan is under licence. ²¹Some chargers may not be compatible with your LEAF. Contact charger manufacturer before purchase for information on compatibility and warranty. Nissan does not warrant and is not responsible for loss, including consequential, incidental, or other damages, caused by charger defects or incompatibility. ²²Public charging networks are provided by independent companies, and are not within Nissan's control. Availability of charging stations not guaranteed. ²³Information displayed is dependent on how vehicle is equipped. Driving is serious business and requires your full attention. If you have to use the feature while driving, exercise extreme caution at all times so full attention may be given to vehicle operation. ²⁴Extra cost option. ²⁵Leather appointments. ²⁶Whenever occurs. ²⁷Intelligent Around View[®] Monitor cannot eliminate blind spots and may not detect every object. Driver should always turn and check surroundings before driving. See Owner's Manual for safety information. ²⁸Intelligent Driver Alertness cannot provide a warning in every situation. See Owner's Manual for safety information. ²⁹Does not detect people or cargo. Always check rear seat before exiting. See Owner's Manual for safety information. ³⁰XM[®] and SiriusXM[®] Satellite Radio is available in the 10 Canadian provinces and the 48 contiguous United States. Subscription sold separately after trial period. All subscriptions subject to customer agreement at siriusxm.ca/terms. All fees and programming subject to change. ©2022 Sirius XM Canada Inc. The Sirius[®], XM[®] and SiriusXM[®] names and all related marks and logos are trademarks of Sirius XM Radio Inc. All other trademarks are the property of their respective owners. ³¹Cargo shown for display purposes only. Cargo and load capacity limited by weight and distribution. Always secure cargo. ³²Brake Assist cannot prevent all collisions and may not provide warning or braking in all conditions. Driver should monitor traffic conditions and brake as needed to prevent collisions. See Owner's Manual for safety information. ³³Intelligent Cruise Control uses limited braking and is not a collision avoidance or warning system. Driver should monitor traffic conditions and brake as needed to prevent collisions. See Owner's Manual for safety information. ³⁴The Rear Sonar System is a convenience, but is not a substitute for proper backing procedures. Always turn and check that it is safe to do so before backing up. May not detect every object behind you. ³⁵Intelligent Trace Control cannot prevent collisions or loss of control. Driver should remain in control of vehicle at all times. See Owner's Manual for safety information. ³⁶Vehicle Dynamic Control cannot prevent collisions due to abrupt steering, carelessness, or dangerous driving techniques. It should remain on when driving, except when freeing the vehicle from mud or snow. See Owner's Manual for safety information. ³⁷Child restraint system. Always wear your seat belt. Rear-facing child restraints should not be placed in the front-passenger's seat. All children 12 and under should ride in the rear seat properly secured in child restraints, booster seats, or seat belts according to their size. Airbags will only inflate in certain accidents. See Owner's Manual for safety information. ³⁸Tire Pressure Monitoring System is not a substitute for regular tire pressure checks. See Owner's Manual for safety information. ³⁹Vehicle must be on for the Easy-Fill Tire Alert to operate. ⁴⁰2023 Fuel Economy Estimates. Based on Natural Resources Canada formula of 8.9 kW/hour equal to one litre of gasoline energy. NRCAn rated the Nissan LEAF SV equivalent to 1.9 Le/100 km (148 MPGe) measured as gasoline fuel efficiency in city driving and 2.4 Le/100 km (119 MPGe) in highway driving. NRCAn rated the Nissan LEAF SV PLUS and SL PLUS equivalent to 1.9 Le/100 km (145 MPGe) measured as gasoline fuel efficiency in city driving and 2.4 Le/100 km (118 MPGe) in highway driving. Actual range will vary based on driving conditions, use of HVAC and/or accessories, driving habits, weight carried and vehicle's condition. Apple CarPlay[®] Apple Music,[®] and Siri[®] are registered trademarks of Apple, Inc. Bluetooth[®] is a registered trademark of Bluetooth SIG, Inc. Bose[®] is a registered trademark of The Bose Corporation. Facebook[®] is a registered trademark of Facebook, Inc. XM[®] is a registered trademark of Services Fio inc. Google Android[®] and Android Auto are trademarks of Google LLC. To use Android Auto on your car display, you'll need an Android phone running Android 6 or higher, an active data plan, and the Android Auto app. Instagram[®] is a registered trademark of Instagram, LLC. iPhone[®] is a registered trademark of Apple, Inc. All rights reserved. iPhone[®] or other external device not included. Twitter[®] is a registered trademark of Twitter, Inc. YouTube[®] is a registered trademark of Google LLC. This brochure is intended for general descriptive and informational purposes only. It is subject to change and does not constitute an offer, representation or warranty. Information was prepared by Nissan Canada inc. Interested parties should confirm the accuracy of any information in this brochure as it relates to a vehicle directly with Nissan Canada Inc. before relying on it to make a purchase decision. Nissan Canada Inc. reserves the right to make changes, at any time, without prior notice, in prices, colours, materials, equipment, specifications, and models and to discontinue models or equipment. **Due to continuous product development and other pre- and post-production factors, actual vehicle, materials and specifications may vary from this brochure. Some vehicles shown with optional equipment.** See the actual vehicle for complete accuracy. Availability and delivery times for particular models or equipment may vary. For additional information on availability, options or accessories, see your Nissan dealer or contact Nissan Canada Inc. For more information on Nissan products and services visit nissan.ca. The Nissan names, logos, product names, feature names, and slogans are trademarks owned by or licensed to Nissan Motor Co. Ltd. and/or its North American subsidiaries. Catalogue number: **99999-23LEAFEN**. ©2022 Nissan Canada Inc. All rights reserved.